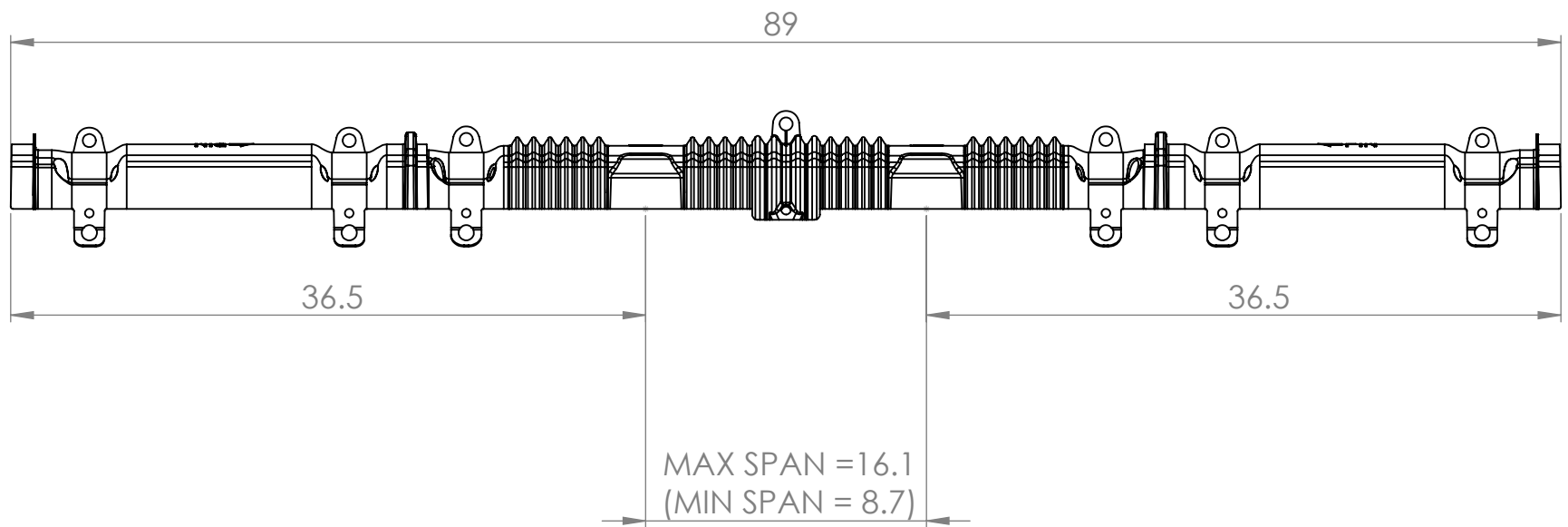
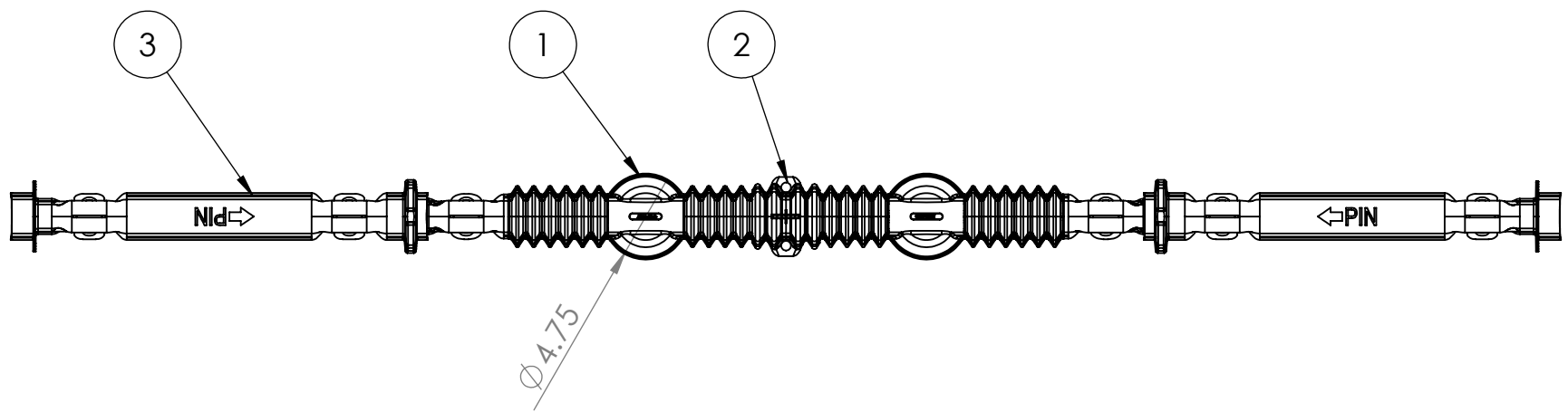
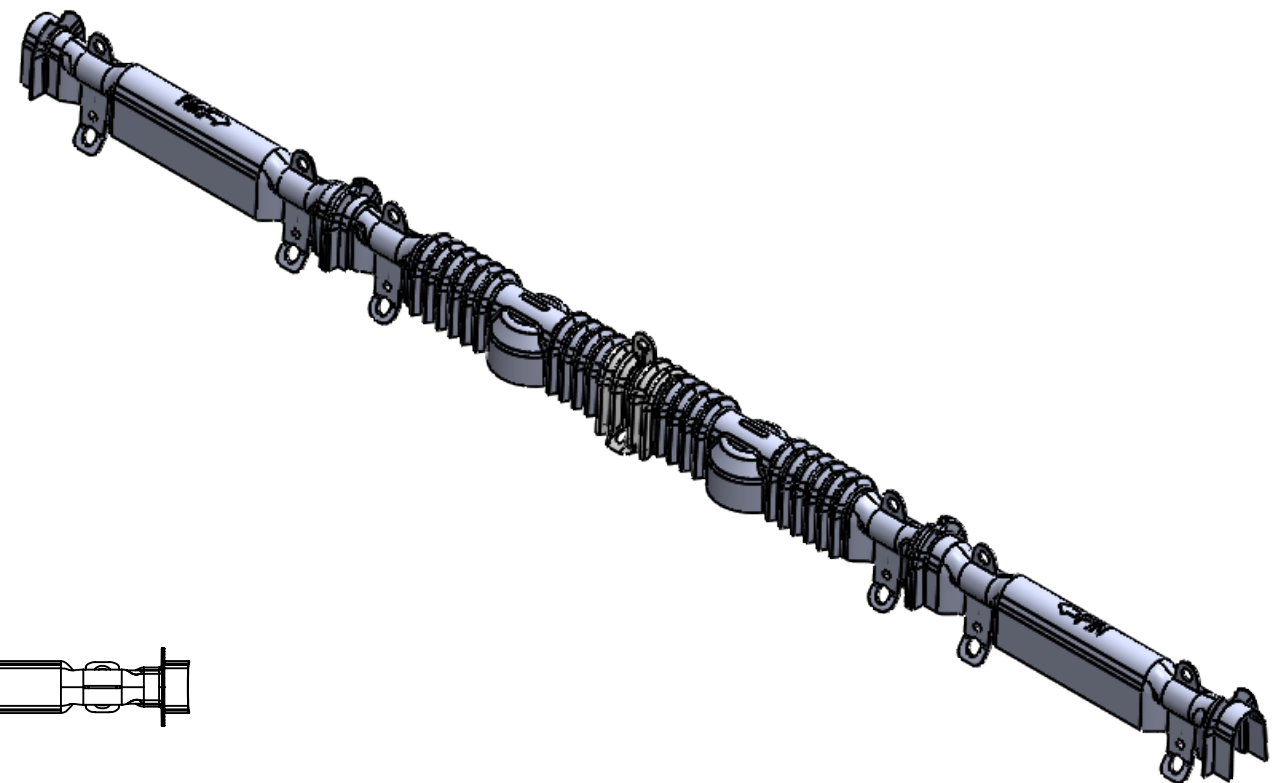


ITEM NO.	PART NUMBER	DESCRIPTION	QTY.
1	PI-13000	MAX LENGTH TRIMMED PIN INSULATOR GUARD	2
2	PI-10001	DOUBLE PIN LINK	1
3	PI-13026	PIN INSULATOR EXTENSION ARM GUARD	2



PROPRIETARY AND CONFIDENTIAL
 THE INFORMATION CONTAINED IN THIS DRAWING IS THE SOLE PROPERTY OF RELIAGUARD INC. ANY REPRODUCTION IN PART OR AS A WHOLE WITHOUT THE WRITTEN PERMISSION OF RELIAGUARD INC. IS PROHIBITED.

UNLESS OTHERWISE SPECIFIED:					
DIMENSIONS ARE IN INCHES		PROJECTION		TITLE:	
TOLERANCES: TWO PLACE DECIMAL ± .030 THREE PLACE DECIMAL ± .010 ANGLE: ± 1.0 deg				DOUBLE PIN INSULATOR GUARD KIT	
INTERPRET GEOMETRIC TOLERANCING PER: ASME 14.5		NAME	DATE	SIZE	DWG. NO.
MATERIAL: RELIATANUM		DRAWN		B	PI-13120K
FINISH:		CHECKED		SCALE: 1:20	REV: A
DO NOT SCALE DRAWING		APPROVED		SHEET 1 OF 1	